

NORTHERN LIGHTS

ACCESSORIES For Marine Generators



Accessories for

5-33 kW
60 Hz / 1800 RPM

4.5-26 kW
50 Hz / 1500 RPM

MAKING THE BEST EVEN BETTER

Northern Lights offers the most complete line of accessories in the industry. From high output battery charging alternators to exhaust gas / water separators, Northern Lights' comprehensive list of options and decades of experience with custom configurations is unmatched.

Add a sound attenuating enclosure for the ultimate in quiet power or a PTO to run your bow thruster. 12 or 24-volt, single or three phase, wet or dry exhaust, heat exchanged or keel cooled, Northern Lights offers it! A panel in the galley, stateroom and wheelhouse? No problem!

Let Northern Lights build a generator to your specifications at the factory, you'll save time and money by avoiding expensive modifications in the field. Northern Lights builds generators with options to comply with a variety of classification societies such as Lloyd's, ABS, DNV, BV, RINA, and Germanischer Lloyd's.

This accessory brochure lists many of our more popular options. To learn more about these options and others not listed, simply contact your Northern Lights' dealer or call the factory. With Northern Lights, you get the features you want.

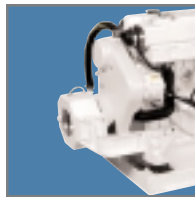


NORTHERN LIGHTS ACCESSORIES



Sound Enclosures

These enclosures are the highest performing production enclosures in the industry. Designed and tested to attenuate up to 20 dBA, these enclosures reduce noise like making a normal conversation quieter than a very soft whisper. Trigger latch panels make maintenance quick and easy.



PTO's

This front power take-off gives you the power for accessories at the flip of a switch. Run your hydraulic thrusters, windlass, or sail equipment with this powerful option. Available on the M843NK and larger models, 18 to 48 hp is available depending on the model and RPM.



Water Lift Muffler

Cools hot exhaust gasses and silences exhaust noise. The standard model is listed, and a variety of other styles and configurations are also available.



High Output Alternator

Increase your battery charging capabilities with a high output alternator. An adjustable voltage regulator for use with either lead acid or gell cell batteries is optional.



Gas / Water Separator

Separates the exhaust gas and water mixture allowing the water to exit under the hull and gasses at the transom without the noisy splashing. It reduces the exhaust noise so your time aboard is quieter and more enjoyable.



Siphon Break

Prevents raw water from siphoning back into the engine. Standard on 5 & 6 kW, optional on 8-33 kW models. Used with wet exhaust systems only.



Primary Fuel Filters

Extend your generator's life by removing contaminants in the fuel. These fuel filters are designed to protect the engine from damaging particles and water, enhance performance, and increase reliability.



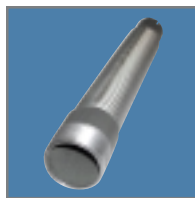
Electric Fuel Pump

Adds design flexibility by allowing the fuel tank and generator to be installed further apart. Also allows easier fuel system bleeding.



Shore Power Switches

Conveniently switches your vessel's AC source from shore power to generator power. It also keeps shore power and generator power separate, preventing accidental connection of the two sources – such connection can have devastating effects.



Dry Exhaust Flex

Connects the exhaust system to the engine and reduces vibration transmission through the dry exhaust. Also allows for remote mounting of the muffler and compensates for the thermal expansion of the exhaust system.



Spare Parts Kits

Belts, gaskets, o-rings, pumps, and much more – be prepared and organized for routine maintenance or problems the tough marine environment can deliver. Even the most reliable generators require spare parts kits. The

Standard Kit contains and organizes basic repair parts, and the World Class Kit prepares you for longer voyages.



Videos & Manuals

Make simple repairs and routine service quickly and with confidence. These manuals and videos include simple drawings and explanations that make daily maintenance hassle-free and faster for you. "Don't Drown Me" is an easy-to-understand illustration, explaining how to install your generator correctly. Parts and operator's manuals come standard.

ACCESSORIES AND PART NUMBERS

	M673D	M673L	M753K	M773LK	M843JK	M843NK	M844K	M844LK	M864K	M984K
KW RATINGS										
60Hz @ 1800 / 50Hz @ 1500	5kW / 4.5kW	6kW / 5kW	8kW / 6kW	9kW / 7kW	10kW / 8kW	12kW / 10kW	16kW / 12kW	20kW / 16kW	25kW / 20kW	33kW / 26kW
SOUND ENCLOSURES	05-78000	05-78000	05-78600	05-78600	05-73100	05-73100	05-70000	05-70000	05-78700	05-75400
POWER TAKE-OFF (PTO)										
PTO w/electric clutch - 12 Volt	n/a	n/a	n/a	n/a	n/a	34-63100	34-68100	34-68100	34-68700	34-65410
PTO w/electric clutch - 24 Volt	n/a	n/a	n/a	n/a	n/a	34-63105	34-68105	34-68105	34-68705	34-65415
EXHAUST SYSTEMS										
Water Lift Type Muffler (1.5", 2", 3")	00-38300	00-38300	00-32000	00-32000	00-32000	00-32000	00-32000	00-32000	00-35400	00-35400
Gas / Water Separator (1.5", 2", 3")	00-32006	00-32006	00-32007	00-32007	00-32007	00-32007	00-32007	00-32007	00-35406	00-35406
Dry Exhaust - Critical Residential	27-31232	27-31232	27-31213	27-31213	27-31213	27-31213	27-31213	27-31213	27-31214	27-31214
Dry Exhaust Flex	27-38302	27-38302	27-31904	27-31904	27-31904	27-31904	27-31904	27-31904	27-30010	27-30010
Siphon Break (3/4")	Standard	Standard	27-18301	27-18301	27-18301	27-18301	27-18301	27-18301	27-18301	27-18301
FUEL SYSTEMS										
Standard Fuel Filter	24-50002	24-50002	24-50002	24-50002	24-50002	24-50002	24-50002	24-50002	n/a	n/a
High Capacity Fuel Filter	24-51000	24-51000	24-51000	24-51000	24-51000	24-51000	24-51000	24-51000	24-51000	24-51000
High Capacity Metal Bowl Filter	24-50004	24-50004	24-50004	24-50004	24-50004	24-50004	24-50004	24-50004	24-50004	24-50004
Electric Fuel Pump - 12 Volt	26-71001	26-71001	26-71001	26-71001	26-71001	26-71001	26-71001	26-71001	26-71001	26-71001
DC ELECTRICAL SYSTEMS										
12 Volt Isolated Ground	22-78300	22-78300	22-78200	22-78601	22-73100	22-73100	22-78100	22-78100	22-78701	22-75422
24 Volt Isolated Ground	n/a	n/a	22-78210	22-78611	22-73136	22-43150	22-78120	22-78410	22-78711	22-75427
24 Volt Standard Ground	n/a	n/a	22-48205	22-78606	22-73131	22-43140	22-78110	22-78400	22-78706	22-45472
SHORE POWER SWITCHES										
120 / 240 Volt	22-72000	22-72000	22-72004	22-72004	22-75405	22-75405	22-75405	22-75405	22-75405	22-75405
240 Volt - 2 Pole Switches	22-72000	22-72000	22-72000	22-72000	22-72004	22-72004	22-72004	22-72004	22-75405	22-75405
240 Volt - 3 Pole Switches	22-72009	22-72009	22-72009	22-72009	22-72009	22-72009	22-75401	22-75401	22-75402	22-75402
12 VOLT HIGH OUTPUT ALTERNATOR	n/a	n/a	22-78230	22-78630	22-73155	22-72015	22-72015	22-78440	22-78715	22-75435
SPARE PARTS KITS										
Standard - Heat Exchanger	38-08005	38-08011	38-08201	38-08600	38-03108	38-03103	38-08100	38-08400	38-08700	38-75405
World Class - Heat Exchanger	38-08006	38-08009	38-08200	38-08602	38-03110	38-03105	38-08105	38-08405	38-08702	38-75425
Standard - Keel Cooling	38-08007	38-08012	38-08203	38-08601	38-03109	38-03104	38-08110	38-08410	38-08700	38-75415
World Class - Keel Cooling	38-08008	38-08010	38-08202	38-08603	38-03111	38-03106	38-08115	38-08415	38-08703	38-75435
Northern Lights Fuel Filter	24-52020	24-52020	24-52020	24-52020	24-52020	24-52020	24-52020	24-52020	24-52020	24-52020
Oil Filter	24-02001	24-08001	24-02001	24-02001	24-03100	24-03100	24-03100	24-03100	24-08701	24-05401
MANUALS / VIDEOS										
Operator's Manual	OM643-673M	OM673L	O753K	OM773LK	O843K	O843K	O844K	O844K	OM864K	OM984K
Parts Manual	P673	P673L	P753K	P773LK	P843K	P843K	P844K	P844K	P864K	P984
Workshop Manual	W673	W673L	W753	W773L	W843N	W843N	W844	W844	W864	W984
"Don't Drown Me" Video	V102	V102	V102	V102	V102	V102	V102	V102	V102	V102
Maintenance Video	V131	V131	V131	V131	V131	V131	V131	V131	V131	V131

WARRANTY & SUPPORT

Northern Lights generators, including parts and accessories, are backed by an unmatched, transferable global warranty. Northern Lights' worldwide dealer network is more than 300 strong, and Northern Lights' helpful dealers offer parts, accessories, and service in more than 40 countries. Visit our web site at www.northern-lights.com to locate the dealer nearest you.



PANELS, HARNESSSES, AND CIRCUIT BREAKERS

CONTROL PANELS

Choose the amount of control you want! Northern Lights offers four control panels for these models, each available in 12 or 24 Volt. These handsome panels allow you to monitor and control your generator from one or several locations onboard. Custom panels available.

M673D - M844LK	
PANELS	
S-1 (12 Volt)	22-92110
S-1 (24 Volt)	22-92115
S-1B (12 Volt)	22-92120
S-1B (24 Volt)	22-92125
S-3C (12 Volt)	22-92015
S-3C (24 Volt)	22-92014
S-3B (12 Volt)	22-92031
S-3B (24 Volt)	22-95420
M864K - M984	
S-1 & S-1B	Same as above
S-3C (12 Volt)	22-95440
S-3C (24 Volt)	22-95450
S-3B (12 Volt)	22-95480
S-3B (24 Volt)	22-95485

EXTENSION HARNESS

M673D - M984K	
HARNESSSES	
10 ft.	22-40928
20 ft.	22-40930
40 ft.	22-40931
70 ft.	22-40970
100 ft.	22-40400
"Y" Harness	22-40932

CIRCUIT BREAKERS

M753K - M984K	
CIRCUIT BREAKERS	
30 amp single phase 120/240 VAC	22-70230
40 amp single phase 120/240 VAC	22-70240
50 amp single phase 120/240 VAC	22-70250
60 amp single phase 120/240 VAC	22-70260
70 amp single phase 120/240 VAC	22-70270
80 amp single phase 120/240 VAC	22-70280
100 amp single phase 120/240 VAC	22-70300
*150 amp single phase 120/240 VAC	22-70350
100 amp three phase 120/208 VAC	22-73300
*125 amp three phase 120/208 VAC	22-70325

* M984 only



Length - 3.38" x Height - 2.88"

S-1

Includes: Run light, start/stop and shutdown bypass/preheat switch.



Length - 5.5" x Height - 2.88"

S-1B

Includes: Run light, engine hourmeter, start/stop, and shutdown bypass/preheat switch.



Length - 10" x Height - 8" x Depth - 4"

S-3B

Includes: DC voltmeter, water temperature gauge, oil pressure gauge, engine hourmeter, start/stop, and shutdown bypass/preheat switch.

Includes a NEMA enclosure.



Length - 7" x Height - 5.25"

S-3C

Includes: DC voltmeter, water temperature gauge, oil pressure gauge, engine hourmeter, start/stop, and shutdown bypass/preheat switch.

Available with enclosure.



Extension Harness

From 10 to 100 feet, these harnesses are sturdy yet flexible and give today's

boaters the convenience they need.

Remotely mount your panels throughout the vessel.



"Y" Harness

Allows you to install multiple control panels from one plug-in.



Circuit Breakers

Protects vessel wiring, electronics, and other equipment onboard.

These circuit breakers give you the peace of mind of added safety.

4420 14th Avenue NW
PO Box 70543
Seattle, WA 98107-0543
Phone: 206-789-3880
Fax: 206-782-5455
Toll-Free: 800-762-0165



www.northern-lights.com